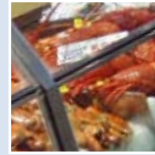


FOOD GRADE HANDLING EQUIPMENT



HCH - 01

HCH - 07

HCH - 27



HCH - 02



HCH - 04
HCH - 05
HCH - 06



HCH - 09
HCH - 10
HCH - 16



HCH - 24
HCH - 25
HCH - 26



HCH - 29
HCH - 30
HCH - 31

NAYLA
PTY LIMITED

TEL: +61 (0)2 9678 9200

FAX: +61 (0)2 9678 9755

Email: nayla@nayla.com

Web: www.nayla.com

Articles supplied by Harold Moore (HM) are approved for use in the food industry and food contact. Complies with FDA/EU 90/128.

Colour coded for use with the **HACCP** concept.

Insert colour letter at end of article number unless stated otherwise.



ALL PURPOSE STORAGE SYSTEMS TEMP 120°C

- FBK80000 - HOOK 60 mm
- FBK15150 - TOOL HOLDER Ø 22 - 32 mm
- FBK15151 - TOOL HOLDER Ø 28 - 38 mm
- FBK15156 - WALL BRACKET 300 mm Rail only inc screws end cap
- FBK15154 - WALL BRACKET 500 mm Rail only inc screws end cap
- FBK15153 - WALL BRACKET 900 mm Rail only inc screws end cap



HAND SHOVELS PP TEMP RANGE -30°C + 80°C

BLACK KNOB / COLOURED BLADE

- HCH - 01 HAND SHOVEL SMALL BLADE 242(W) X 264(D) X 478(L) mm
- HCH - 07 HAND SHOVEL STANDARD BLADE 247(W) x 315(D) x 527(L) mm
- HCH - 27 HAND SHOVEL DEEP PAN SMALL BLADE 257(W) x 350(D) x 587(L) mm



TWO PIECE SHOVELS PP TEMP RANGE -30°C + 80°C

BLACK HANDLE / COLOURED BLADE

- HCH - 02 SHOVEL SMALL BLADE 242(W) x 264(D) x 930(L) mm
- HCH - 04 SHOVEL STANDARD BLADE 247(W) x 315(D) x 978(L) mm
- HCH - 05 SHOVEL STANDARD BLADE 247(W) x 315(D) x 1103(L) mm
- HCH - 06 SHOVEL STANDARD BLADE 247(W) x 315(D) x 1360(L) mm
- HCH - 09 SHOVEL LARGE BLADE 334(W) x 410(D) x 1035(L) mm
- HCH - 10 SHOVEL LARGE BLADE 334(W) x 410(D) x 1159(L) mm
- HCH - 16 SHOVEL LARGE BLADE 334(W) x 410(D) x 1410(L) mm
- HCH - 24 SHOVEL DEEP PAN SMALL BLADE 257(W) x 350(D) x 1045(L) mm
- HCH - 25 SHOVEL DEEP PAN SMALL BLADE 257(W) x 350(D) x 1169(L) mm
- HCH - 26 SHOVEL DEEP PAN SMALL BLADE 257(W) x 350(D) x 1420(L) mm
- HCH - 29 SHOVEL DEEP PAN LARGE BLADE 341(W) x 395(D) x 1111(L) mm
- HCH - 30 SHOVEL DEEP PAN LARGE BLADE 341(W) x 395(D) x 1238(L) mm
- HCH - 31 SHOVEL DEEP PAN LARGE BLADE 341(W) x 395(D) x 1480(L) mm



PP = Polypropylene

NAYLA
PTY LIMITED

TEL: +61 (0)2 9678 9200

FAX: +61 (0)2 9678 9755

Email: nayla@nayla.com

Web: www.nayla.com

Prices listed are subject to change without notice and are exclusive of freight and GST. Terms and Conditions of Sale available upon request.